

## DESIGNS

- Utilizes field-proven Flare frac plug design
- Unique metal-to-metal seal design
- Multiple patents
- Adjustable fluid bypass contingency design

## FEATURES

- Large bore ID
- Anti-pre-set design ensures you get to set depth successfully
- Current design sizes range 3-1/2" to 6"
- 10,000 PSI capability at 350°F
- Field-proven alloys and design function (isolation and degradation)
- Production capability of several thousand per month
- 5" and smaller set on Baker 10 and Multi-Stage Go setting tools
- 5-1/2" and larger set on Baker 20 and 3-1/2" Go setting tools
- Available for fresh and produced water applications
- Wireline adapter kits available for both standard and disposable setting tools
- Caged ball design with contingency device allows for secondary wireline run after plug is set
- Extreme pump rate capable +24 BPM with no speed limits (allows rapid trip to bottom)
- Proven in all major US basins: Permian, Bakken, Eagle Ford, Marcellus, Niobrara and Haynesville



GET THERE  
SET THERE  
FRAC THERE  
DISSOLVE THERE

“ WE’VE TRIALED WHAT SEEMS LIKE ENDLESS MAGNESIUM-BASED DISSOLVABLE PLUGS. ALL OF THEM SEEM TO BE PLAGUED BY SLIPS DURING FRAC. JET’S DESIGN HAS CONSISTENTLY PROVEN TO BE THE MOST RELIABLE OPTION FOR US.

- Permian / Delaware Basin Customer



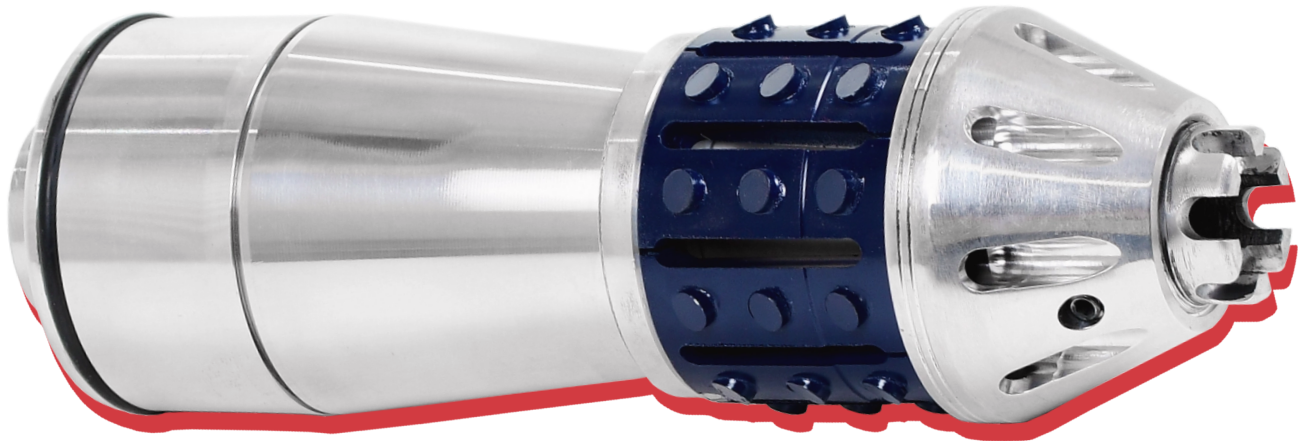
John Billings  
Business Dev Manager  
940-249-2219

Alex Miller  
Director, Technical Sales  
512-659-1551

Brandon Wilkins  
Vice President, Sales  
325-725-6252

Janie Snelson  
Corporate Sales  
432-557-3165





## TECHNICAL SPECIFICATIONS

| Casing Size<br>in. (mm)  | Casing Weight<br>ft/lb (kg/m)       | Casing ID Range<br>in. (mm)             | Plug OD<br>in. (mm)    | Plug ID<br>in. (mm)   | Length<br>in. (mm)      | Max Temp<br>F (C)   |
|--------------------------|-------------------------------------|-----------------------------------------|------------------------|-----------------------|-------------------------|---------------------|
| <b>3-1/2"</b><br>(88.9)  | <b>12.95</b><br>(19.3)              | <b>2.75 - 3.068</b><br>(69.9 - 77.9)    | <b>2.66</b><br>(67.6)  | <b>0.75</b><br>(19.1) | <b>9.32</b><br>(236.7)  | <b>350</b><br>(177) |
| <b>3-1/2"</b><br>(88.9)  | <b>9.2 - 10.2</b><br>(13.7 - 15.2)  | <b>2.922 - 2.992</b><br>(74.2 - 75.9)   | <b>2.50</b><br>(63.5)  | <b>0.75</b><br>(19.1) | <b>10.88</b><br>(276.4) | <b>350</b><br>(177) |
| <b>4-1/2"</b><br>(114.3) | <b>11.6 - 13.5</b><br>(17.3 - 20.1) | <b>3.853 - 4.069</b><br>(97.9 - 103.4)  | <b>3.67</b><br>(93.2)  | <b>1.0</b><br>(25.4)  | <b>10.02</b><br>(254.5) | <b>350</b><br>(177) |
| <b>4-1/2"</b><br>(114.3) | <b>15.1</b><br>(22.5)               | <b>3.752 - 3.904</b><br>(95.3 - 99.2)   | <b>3.60</b><br>(91.4)  | <b>1.0</b><br>(25.4)  | <b>10.48</b><br>(266.2) | <b>350</b><br>(177) |
| <b>5"</b><br>(127.0)     | <b>18 - 21.4</b><br>(26.8 - 31.8)   | <b>4.126 - 4.276</b><br>(104.8 - 108.6) | <b>3.87</b><br>(98.4)  | <b>1.0</b><br>(25.4)  | <b>11.05</b><br>(280.7) | <b>350</b><br>(177) |
| <b>5-1/2"</b><br>(139.7) | <b>17 - 20</b><br>(25.3 - 29.8)     | <b>4.695 - 4.976</b><br>(119.2 - 126.4) | <b>4.57</b><br>(116.1) | <b>1.63</b><br>(41.4) | <b>11.18</b><br>(283.9) | <b>350</b><br>(177) |
| <b>5-1/2"</b><br>(139.7) | <b>20 - 23</b><br>(29.8 - 34.2)     | <b>4.579 - 4.653</b><br>(116.3 - 118.2) | <b>4.37</b><br>(111.0) | <b>1.63</b><br>(41.4) | <b>11.29</b><br>(286.8) | <b>350</b><br>(177) |
| <b>5-1/2"</b><br>(139.7) | <b>23 - 26</b><br>(34.2 - 38.7)     | <b>4.548 - 4.670</b><br>(115.5 - 118.6) | <b>4.30</b><br>(109.2) | <b>1.63</b><br>(41.4) | <b>11.19</b><br>(243)   | <b>350</b><br>(177) |
| <b>6"</b><br>(152.4)     | <b>24.5 - 25.5</b><br>(36.5 - 37.9) | <b>5.109 - 5.230</b><br>(129.8 - 132.8) | <b>4.92</b><br>(125.0) | <b>2.0</b><br>(50.8)  | <b>11.70</b><br>(297.2) | <b>350</b><br>(177) |

