

DESIGNS

- Flare frac plug design
- Unique metal-to-metal seal design
- Multiple patents
- High-pressure qualified dissolving balls

FEATURES

- Ball-in-Place or Ball-Drop configurations available
- Large bore ID
- Anti-pre-set design ensures you get to set depth successfully
- Current design sizes range 3-1/2" to 6"
- 10,000 PSI capability at 350°F
- Field-proven alloys and design function (isolation and degradation)
- Production capability of several thousand per month
- 5" and smaller set on Baker 10 and Multi-Stage Go setting tools
- 5-1/2" and larger set on Baker 20 and 3-1/2" Go setting tools
- Available for fresh and produced water applications
- Wireline adapter kits available for both standard and disposable setting tools
- Extreme pump rate capable +24 BPM with no speed limits (allows rapid trip to bottom)
- Proven in all major US basins: Permian, Bakken, Eagle Ford, Marcellus, Niobrara and Haynesville



GET THERE
SET THERE
FRAC THERE
DISSOLVE THERE

“ WE’VE TRIALED WHAT SEEMS LIKE ENDLESS MAGNESIUM-BASED DISSOLVABLE PLUGS. ALL OF THEM SEEM TO BE PLAGUED BY SLIPS DURING FRAC. JET’S DESIGN HAS CONSISTENTLY PROVEN TO BE THE MOST RELIABLE OPTION FOR US.

- Permian / Delaware Basin Customer



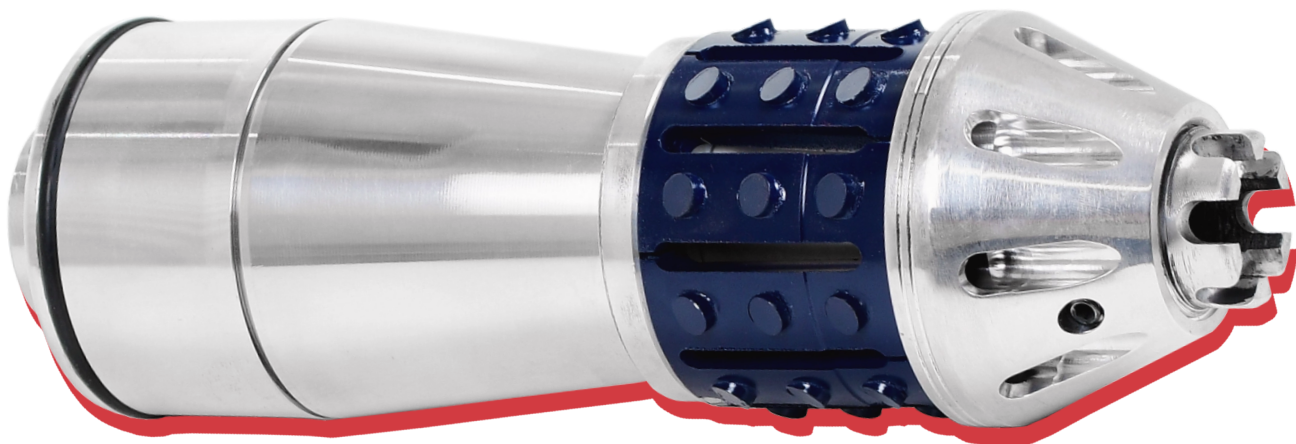
John Billings
Business Dev Manager
940-249-2219

Alex Miller
Director, Technical Sales
512-659-1551

Brandon Wilkins
Vice President, Sales
325-725-6252

Janie Snelson
Corporate Sales
432-557-3165





TECHNICAL SPECIFICATIONS

Casing Size in. (mm)	Casing Weight ft/lb (kg/m)	Casing ID Range in. (mm)	Plug OD in. (mm)	Plug ID in. (mm)	Length in. (mm)	Max Temp F (C)
3-1/2" (88.9)	12.95 (19.3)	2.75 - 3.068 (69.9 - 77.9)	2.66 (67.6)	0.75 (19.1)	9.32 (236.7)	350 (177)
3-1/2" (88.9)	9.2 - 10.2 (13.7 - 15.2)	2.922 - 2.992 (74.2 - 75.9)	2.50 (63.5)	0.75 (19.1)	10.88 (276.4)	350 (177)
4-1/2" (114.3)	11.6 - 13.5 (17.3 - 20.1)	3.853 - 4.069 (97.9 - 103.4)	3.67 (93.2)	1.0 (25.4)	10.02 (254.5)	350 (177)
4-1/2" (114.3)	15.1 (22.5)	3.752 - 3.904 (95.3 - 99.2)	3.60 (91.4)	1.0 (25.4)	10.48 (266.2)	350 (177)
5" (127.0)	18 - 21.4 (26.8 - 31.8)	4.126 - 4.276 (104.8 - 108.6)	3.87 (98.4)	1.0 (25.4)	11.05 (280.7)	350 (177)
5-1/2" (139.7)	17 - 20 (25.3 - 29.8)	4.695 - 4.976 (119.2 - 126.4)	4.57 (116.1)	1.63 (41.4)	11.18 (283.9)	350 (177)
5-1/2" (139.7)	20 - 23 (29.8 - 34.2)	4.579 - 4.653 (116.3 - 118.2)	4.37 (111.0)	1.63 (41.4)	11.29 (286.8)	350 (177)
5-1/2" (139.7)	23 - 26 (34.2 - 38.7)	4.548 - 4.670 (115.5 - 118.6)	4.30 (109.2)	1.63 (41.4)	11.19 (243)	350 (177)
6" (152.4)	24.5 - 25.5 (36.5 - 37.9)	5.109 - 5.230 (129.8 - 132.8)	4.92 (125.0)	2.0 (50.8)	11.70 (297.2)	350 (177)

